



School Brochure 2015

Courses

Standard Course

- General English, mornings only
- 15 hours a week
- Elementary to Advanced Level

This course aims to improve your level of general English. Lessons are designed to improve the four skills – speaking, listening, reading and writing. Teachers also focus on grammar, pronunciation, accuracy and vocabulary development.

Standard Plus Course

- General English, mornings & afternoons
- 21 hours a week
- Elementary to Advanced Level

This course follows the same format as the Standard Course in the mornings. In the afternoons students can choose from different 'Options'. These include 'English for Work' and 'Skills Practice'.

Exams include: IELTS, FCE, CAE, CPE

English for Professionals

- 15 hours group classes a week
- 10 hours one-to-one tuition a week
- Elementary to Advanced Level

This course is for business clients who require a short intensive course tailored to their needs. It combines the General English group classes in the mornings with two hours of one-to-one tuition each afternoon. A 'needs analysis' is conducted before the course starts.

Accommodation



Homestay

Single or shared room with breakfast and evening meal every day. We understand that a good homestay is very important and we take great care in selecting and checking our homestay hosts to ensure quality of service.



Hall of Residence

Self-catering single rooms with private bathroom in excellent central locations for students aged 18 and older. These are ideal for students who want more independence. A warden is on-site to meet students on arrival and help them during their stay.



Private Residence

Self-catering single or double rooms in New School owned houses. These offer a higher standard of independent accommodation with excellent facilities, larger rooms and fewer students.

Social programme



We provide a wide variety of social and cultural events each week. This helps students to integrate allowing them to practise their English outside the classroom while making the most of their stay in the UK. You can see our monthly timetable of events on the 'Student Life' page of our website.



[facebook.com/newschool.cambridge](https://www.facebook.com/newschool.cambridge)

Transport to Cambridge

There are excellent transport links to Cambridge from all London airports. **Stansted / Luton / Heathrow / Gatwick**

By taxi

We offer a taxi transfer service from your point of arrival to Cambridge.

Fees 2015 – one way:

Heathrow & Gatwick £150

Luton & Stansted £90

London St Pancras £120

For full details please see:

www.newschool.co.uk/getting-here

By train

If you arrive by train you need to go to King's Cross Station in London by taxi or underground to come to Cambridge. The journey time is about one hour.

You can buy tickets online at

www.thetrainline.com

Check train times online at

www.nationalrail.co.uk

By coach

There is a frequent coach service from Gatwick, Heathrow, Stansted and Luton airports. You can buy your ticket on the coach and it is possible to pay by credit card.

Check coach times online at

www.nationalexpress.com

General English Courses

| Weeks | Standard 15 hours | Standard Plus 21 hours |
|-------------------|----------------------|---------------------------|
| Short Courses | | |
| 2 | £460 | £500 |
| 3 | £690 | £750 |
| 4 | £920 | £1,000 |
| Extra week | £230 | £250 |
| Academic Term | | |
| 12 | £2,760 | £3,000 |
| Academic Semester | | |
| 24 | £5,520 | £6,000 |
| Academic Year | | |
| 36 | £8,280 | £9,000 |

Class Times

Morning Class: Monday – Friday
09.30–11.00 and 11.30–13.00

Afternoon Class: Monday–Thursday
14.00–15.30 (No class Friday afternoon)

- Standard Course finishes at 13.00
- Standard Plus course finishes at 15.30



Business English for Professionals (EfP)

25 hours a week – £1,080 per week

For adult students who need English for career/work purposes, but who only have a limited time to study. The one-to-one course content is based on a needs analysis completed by the student. The course combines:

- 15 hours of group classes each week
- 10 hours of one-to-one tuition per week

EfP Class Times Monday to Friday

Morning Class 09.30 – 13.00 Group tuition
(Break 11.00 – 11.30)

Afternoon Class 14.00 – 16.00 One-to-one tuition
(Break 13.00 – 14.00)

- Please check for availability before booking
- Not available in the months of July & August
- Fees include all course materials

Examinations – FCE, CAE, CPE and IELTS

Cambridge Examinations - First Certificate (FCE), Advanced (CAE) and Proficiency (CPE)

NB: It is possible to join exam classes after the start of the course – please contact the school first to check availability.

| First Certificate (FCE) | Weeks | Fees |
|-------------------------|-------|--------|
| 5 Jan – 6 Mar | 9 | £2,250 |
| 23 Mar – 12 Jun | 12 | £3,000 |
| 29 Jun – 31 Jul | 5 | £1,250 |
| 27 Jul – 21 Aug | 4 | £1,000 |
| 14 Sep – 11 Dec | 13 | £3,250 |

| Advanced (CAE) | Weeks | Fees |
|-----------------|-------|--------|
| 5 Jan – 13 Mar | 10 | £2,500 |
| 23 Mar – 12 Jun | 12 | £3,000 |
| 29 Jun – 24 Jul | 4 | £1,000 |
| 27 Jul – 21 Aug | 4 | £1,000 |
| 14 Sep – 4 Dec | 12 | £3,000 |

| Proficiency (CPE) | Weeks | Fees |
|-------------------|-------|--------|
| 5 Jan – 6 Mar | 9 | £2,250 |
| 14 Sep – 4 Dec | 12 | £3,000 |

| | |
|-----------------------------------|------|
| Exam fees for FCE, CAE, CPE 2015: | £140 |
| Exam fees for late entry: | £160 |
| Course materials: | £40 |

- See www.cambridgeopencentre.org for exam dates
- Students follow the Standard Plus format of 21 hours
- General English (mornings) with exam prep (afternoons)

IELTS – International English Language Testing System

This exam course runs throughout the year. Students study General English in the mornings and then have IELTS exam preparation classes in the afternoons

| | |
|---------------------------|------|
| Cost of tuition per week: | £250 |
| IELTS exam fee: | £150 |

- Students follow the Standard Plus format of 21 hours
- Flexible start dates – exam test normally on a Saturday
- Check with school for availability before booking

Accommodation

Home-stay accommodation (includes breakfast and evening meal)

| | |
|-------------|---------------|
| Single room | £150 per week |
| Shared room | £130 per week |

Residential self-catering with private bathroom

| | |
|-------------|---------------|
| Single room | £185 per week |
|-------------|---------------|

Superior private self-catering residences

| | |
|--------------------------------|--------------------------|
| Single room shared bathroom | £185 per week |
| Single room + private bathroom | £215 per week |
| Double room + private bathroom | £185 per person per week |

For residences check availability before booking.

Notes: Students need to arrive on a Sunday and depart on a Saturday. £25 administration fee for accommodation changes.

Key Information

Your first day at School

| | |
|---------------|--|
| 09.00 – 09.15 | Arrive at School |
| 09.30 – 11.00 | English Test |
| 11.00 – 11.30 | Break Time |
| 11.30 – 13.00 | Info about Social Programme, School, facilities, Cambridge |
| 13.00 – 14.00 | Lunch break |
| 14.00 – 15.30 | Standard Plus students have afternoon class. Standard students start Tuesday morning |
| 16.00 – 17.00 | Social activity |

Public holidays in 2015:

3 & 6 April, 4 & 25 May, 31 August
The school is closed on these days.

Christmas:

Classes finish for Christmas 2015 on 11 December 2015 and start on 4 January 2016.

Refund Policy

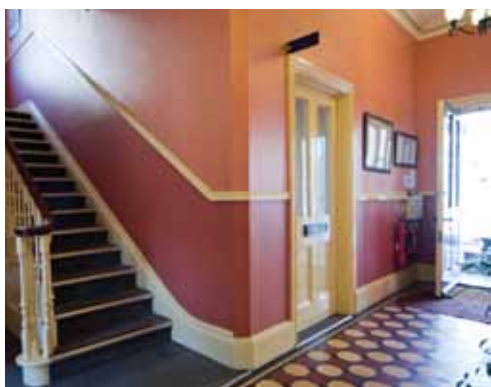
- Deposit of £300 is non-refundable
- No refund for late arrival/early departure/public holidays
- Course fees are not transferable or refundable
- Full terms & conditions are on our website

Courses

- Start any Monday
- Minimum age 16
- Maximum class size 14
- Min. stay 2 weeks (EFP 1 week)
- 1 lesson = 45 mins

Contact

If you want to speak or write in Spanish, Italian or French please contact Nick Hassett at: nick@newschool.co.uk or tel **+44 1223 465750**



Versions of this brochure are also available on our website in the following languages:



How to enrol and pay

- | | | |
|--|--|--|
| STEP 1 <ul style="list-style-type: none">• Go to our website: www.newschool.co.uk• Complete enrolment form online or print PDF and return by email / fax• Visa students must email a scanned copy of passport photo page | STEP 2 <ul style="list-style-type: none">• We confirm booking and then you must pay the £300 deposit. The £70 registration fee is included in the deposit• We email payment details to you | STEP 3 <ul style="list-style-type: none">• When we have your deposit we send you:<ol style="list-style-type: none">1) Letter of confirmation2) Accommodation details3) Information about first day at school4) Invoice for payment |
|--|--|--|

Bank details

For bank transfers, please note that you must pay all bank charges



HSBC STERLING Account details

Account holder: The New School of English
Account number: 91800728
Sort code: 40-16-08
Address: HSBC, Vitrum, St John's Innovation Centre, Cambridge CB4 ODS
IBAN number: GB80 MIDL 40160891800728
BIC/Swift code: MIDLGB2103J



HSBC EURO Account details

Account holder: The New School of English
Account number: 39093139
Sort code: 40-05-15
Address: HSBC, 8 Canada Square, London E14 5HQ
IBAN number: GB58 MIDL 40051539093139
BIC/Swift code: MIDLGB22



| | | |
|--------------|--|--|
| CLASS ID | | |
| DEPOSIT | | |
| FAX ACC | | |
| PROFORMA | | |
| INITIAL CONF | | |
| TAXI | | |
| FINAL CONF | | |
| U18 | | |
| WEB | | |

Enrolment Form

Personal details

Male Female

Family name:

First name:

Nationality:

Date of birth:/...../.....

Age:

Address:

E-mail:

Home tel:

Mobile no:

Occupation:

Where did you hear about the School?

Family/Friends Teacher Website Agent

Course

Standard (15 hrs/week)

Standard Plus (21 hrs/week)

English for Professionals (25 hrs/week)

Exams:

PET FCE IELTS

CAE CPE

Course dates:

From:

To:

No. of Weeks:

What is your level?

(A1) Elementary

(A2) Pre-intermediate

(B1) Intermediate

(B2) Upper Intermediate

(C1) Advanced

(C2) Advanced Plus

Accommodation

Arrival date: Departure date:

Please arrange my accommodation for me. I would prefer:

Single room, breakfast, evening meal

Shared room, breakfast, evening meal*

Residential accommodation, single room, self-catering

Do you smoke? Yes No

Special dietary and medical needs:

*For shared room outside summer, please contact the school for availability

Taxi

Do you need a taxi transfer? Yes No If yes, do you need: One way Two way

Arrival: Airport: Flight number: Departing from:

Date and time of arrival:

Return: Date of take-down: Flight number and time of flight:

Departing from:

Payment

• To reserve your place please pay deposit of £300
 • For details of how to pay deposit and balance of fees please go to
www.newschool.co.uk/dates-fees/payment.aspx
 Or contact the school: info@newschool.co.uk

Tel: + 44 1223 465750

Fax: + 44 1223 315276

The Registration Fee of £70 is included in the deposit. For full details about our terms and conditions including our Refund & Cancellation Policy please see www.newschool.co.uk/refund-policy.aspx

We strongly advise all clients to take out insurance to cover loss of fees in the event that they have to end their course early.